

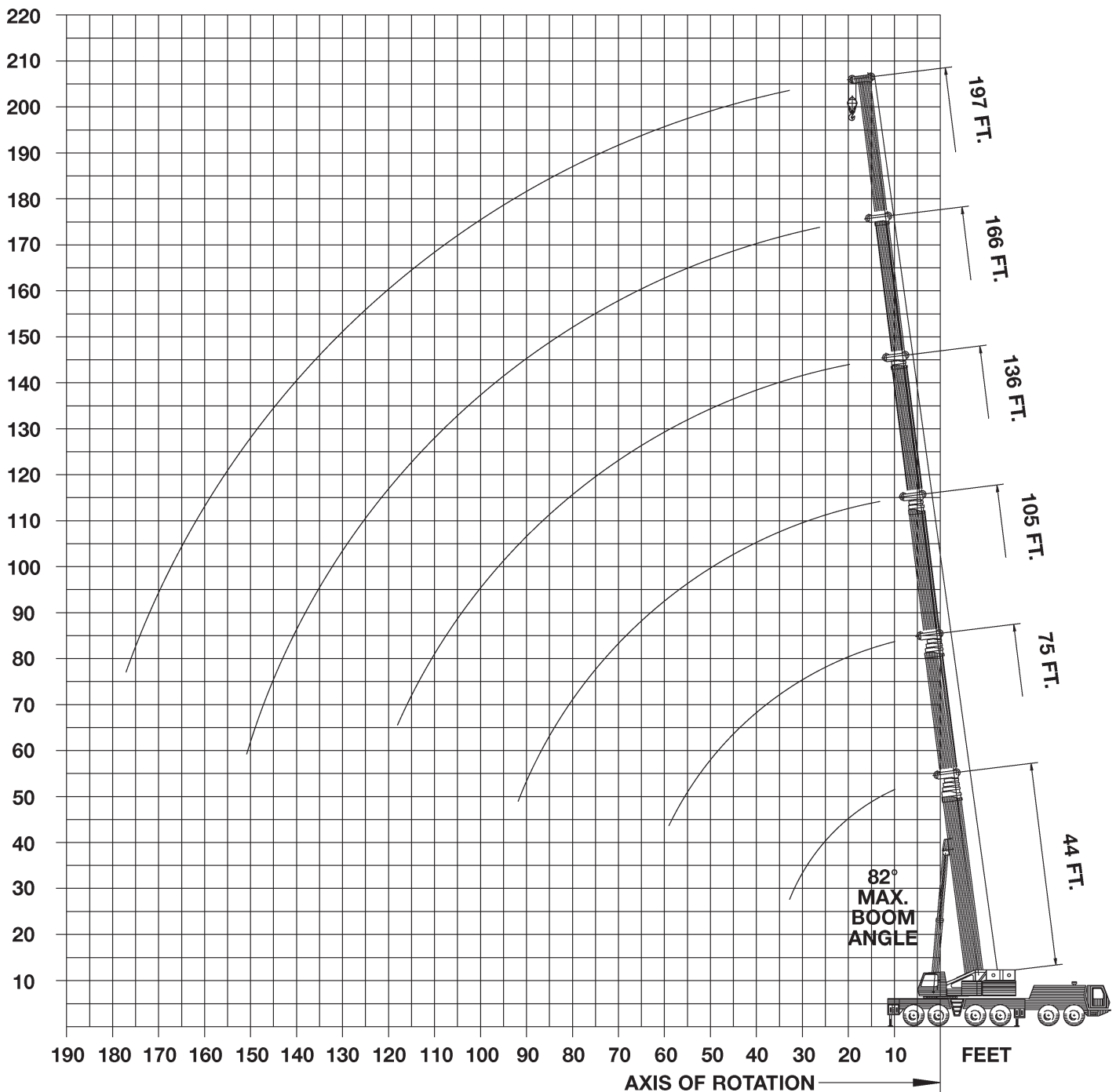
All information given are for reference only.

Crane based out of Bensalem and Cincinnati branch.  
Available in other regions upon special request

250 t

# All Terrain Cranes

Grove GMK 6250




**44-197 ft**

**154,300 lbs**

**28'6"x27'11"**

**360°**
**85**
**85%**

All information given are for reference only.

ft	44*	44	60	75	90	105	121	136	151	166	182	197	ft
8	500												8
9	416												9
10	384	404	364	260	189								10
15	306	306	298	260	189	153							15
20	252	252	248	238	189	153	123	96					20
25	209	209	211	203	181	153	123	96	75				25
30	168	168	182	176	173	146	123	96	75	60	47		30
35			153	150	152	134	116	92	75	60	47	40	35
40			130	127	129	123	107	85	75	60	47	40	40
45			110	109	111	113	99	79	71	60	47	40	45
50				95	97	99	93	74	66	57	47	40	50
55				84	87	88	87	69	62	54	47	40	55
60					80	78	80	64	58	51	45	40	60
65					72	70	73	58	53	48	42.6	39	65
70					65	64	66	55	50	45	40.6	37.4	70
75					60	59	60	52	48	43.2	38.8	35.8	75
80						56	55	49	45	40.8	36.8	34.2	80
85						52	51	46	41.8	38.4	35	32.6	85
90						48	47	42.8	39	36.2	33	30.8	90
95							43.2	39.6	36.2	33.8	31	29.2	95
100							39.8	37	33.6	31.6	29.4	27.6	100
105								35.6	32	30	28	26.4	105
110								34.2	30.6	28.4	26.6	25.2	110
115								33	29	26.6	25.2	23.8	115
120									27	24.6	23.8	22.6	120
125									25	22.6	22.6	21.4	125
130									23	20.8	21.2	20	130
135									21.8	19.2	20.2	19.2	135
140										18.4	19.2	18.4	140
145										17.8	18.4	17.8	145
150										17.2	17.4	17	150
155											16.6	16.2	155
160											15.6	15.6	160
165												14.8	165
170												14.2	170
175												13.6	175
180												12.8	180

\* over rear

Lifting capacities greater than 350,000 lbs require additional equipment

# All Terrain Cranes

Grove GMK 6250



**250 t**



**44-197 ft**



**97,000 lbs**



**28'6"x27'11"**



**360°**

**85**

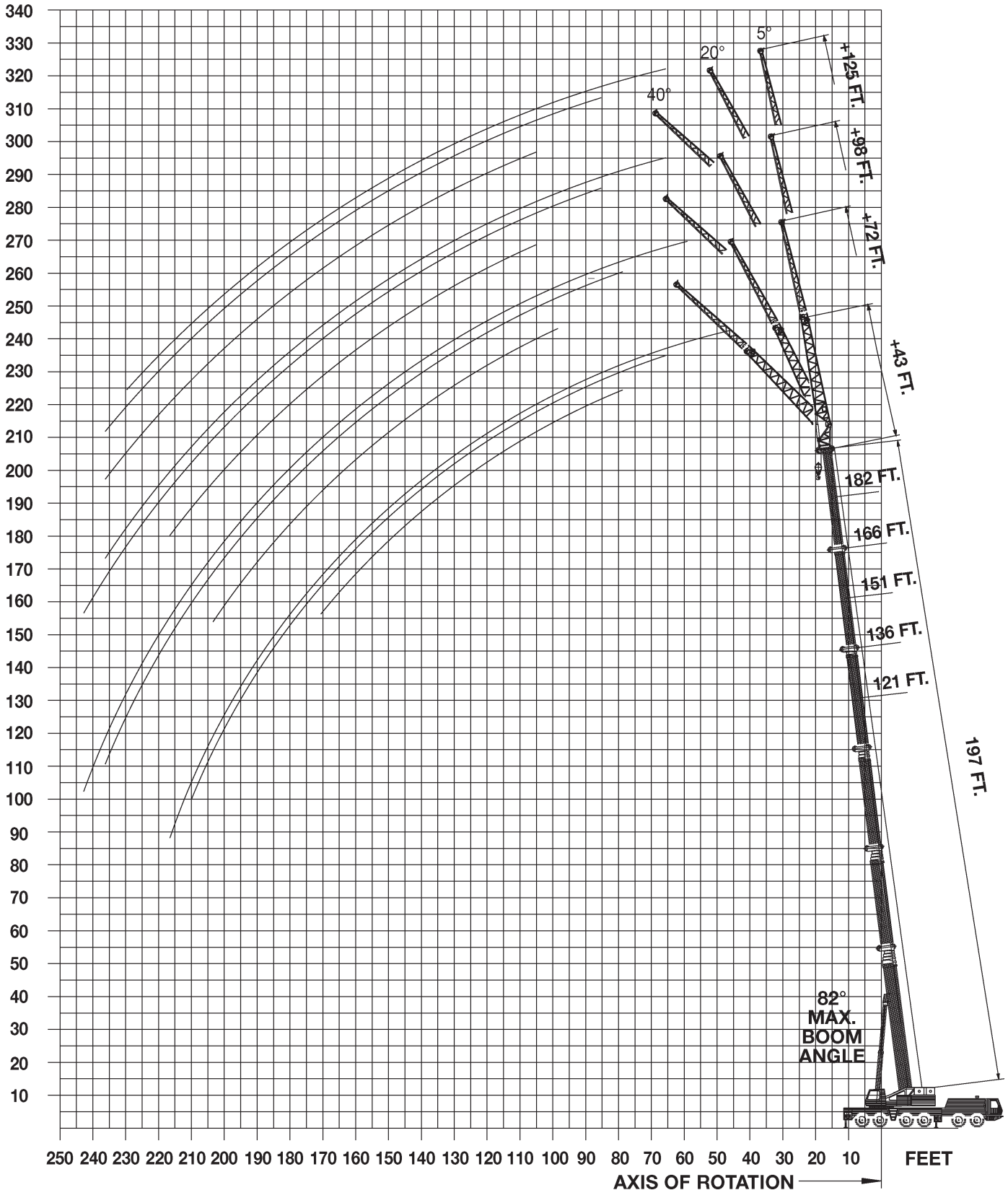
**85%**

ft	44*	44	60	75	90	105	121	136	151	166	182	197	ft
98	440												98
10	384	404	364	260	189								10
15	306	306	298	260	189	153							15
20	252	252	248	238	189	153	123	96					20
25	195	195	197	194	181	153	123	96	75				25
30	155	155	157	154	156	146	123	96	75	60	47		30
35			130	126	129	131	116	92	75	60	47	40	35
40			111	106	112	111	107	85	75	60	47	40	40
45			96	91	97	95	97	79	71	60	47	40	45
50				77	83	85	84	74	66	57	47	40	50
55				65	72	74	72	69	62	54	47	40	55
60					65	65	63	61	58	51	45	40	60
65					58	57	55	54	53	48	42.6	39	65
70					52	51	49	50	48	45	40.6	37.4	70
75					46	46	43.8	46	42.2	42.8	38.8	35.8	75
80						41	41.6	41.2	37.4	38	36.8	34.2	80
85						37	38.8	37	34.4	33.8	35	32.6	85
90						33.4	35.4	33.4	32.6	30.2	31.4	30.8	90
95							32.2	30.4	30.8	28.4	28.2	29.2	95
100							29.4	27.6	28.6	26.8	26	26.8	100
105								25.8	26	25.6	24.8	24.2	105
110								24.6	23.8	24	23.4	22	110
115								23.6	21.8	22	21.4	20	115
120									20.2	20.2	19.6	18.2	120
125									19	18.6	18	16.6	125
130									18	17	16.4	15	130
135									17.2	15.8	15	13.6	135
140										14.8	13.8	12.4	140
145										13.6	12.6	11.2	145
150										12.6	11.6	10	150
155											10.6	9	155
160											9.6	8.2	160
165												7.4	165
170												6.6	170
175												5.8	175
180												5	180

\* over rear

Lifting capacities greater than 350,000 lbs require additional equipment

All information given are for reference only.



07-2011

# All Terrain Cranes

Grove GMK 6250



**250 t**



197 ft



43/72/98/125 ft



154,300 lbs



28'6"x27'11"



360°

**85**

85%

ft	43			72			98			125			ft
	5°	20°	40°	5°	20°	40°	5°	20°	40°	5°	20°	40°	
40	20.6												40
45	20.6												45
50	20.6												50
55	20.6	19.8		12.6									55
60	20.6	19.8		12.6			9.8			6.8			60
65	20.6	19.8		12.6			9.8			6.8			65
70	20.6	19.8	19	12.4			9.8			6.8			70
75	20.6	19.8	19	12.4	11.6		9.8			6.8			75
80	20.6	19.8	19	12.4	11.6		9.8			6.8			80
85	20.6	19.8	19	12.2	11.4		9.8			6.8			85
90	20.6	19.8	19	12.2	11.4		9.8	10.2		6.8	7.2		90
95	20.6	19.8	19	12	11.4	10.6	9.8	10		6.8	7.2		95
100	20.6	19.8	18.8	12	11.2	10.6	9.8	9.8	8.2	6.8	7		100
105	20	19.4	18.6	12	11.2	10.4	9.8	9.8	8.2	6.8	7	6.6	105
110	19.4	18.8	18.2	11.8	11.2	10.4	9.8	9.6	8.2	6.8	6.8	6.6	110
115	18.6	18.2	17.6	11.8	11	10.2	9.8	9.4	8.2	6.8	6.6	6.6	115
120	17.8	17.6	17.2	11.6	11	10.2	9.8	9.2	8.2	6.8	6.6	6.4	120
125	17	17	16.8	11.6	11	10	9.6	9	8.2	6.8	6.4	6.4	125
130	16.2	16.4	16.4	11.6	11	10	9.6	8.8	8.2	6.6	6.4	6.2	130
135	15.6	15.8	15.8	11.4	10.8	9.8	9.4	8.6	8.2	6.4	6.2	6.2	135
140	15	15.2	15.2	11.4	10.8	9.8	9.2	8.6	8	6.4	6.2	6	140
145	14.2	14.6	14.6	11.4	10.8	9.8	9	8.4	8	6.2	6	6	145
150	13.6	13.8	14	11.2	10.6	9.8	8.8	8.2	7.8	6.2	5.8	5.8	150
155	13	13.2	13.6	11.2	10.6	9.6	8.6	8	7.8	6	5.8	5.8	155
160	12.4	12.6	13	11.2	10.4	9.6	8.4	8	7.6	5.8	5.6	5.6	160
165	11.8	12	12.4	11	10.2	9.6	8.2	7.8	7.4	5.8	5.6	5.6	165
170	11.4	11.6	11.8	10.6	10	9.6	8	7.6	7.4	5.6	5.4	5.4	170
175	10.8	11		10.2	9.8	9.4	7.8	7.4	7.4	5.6	5.4	5.2	175
180	10.4	10.6		9.8	9.6	9.4	7.8	7.4	7.2	5.4	5.2	5.2	180
185	10	10		9.4	9.2	9.4	7.6	7.2	7.2	5.4	5.2	5	185
190	9.4	9.6		8.8	9	9.4	7.4	7.2	7	5.2	5	5	190
195	9	9.2		8.4	8.8	9.2	7.2	7	7	5	4.8	4.8	195
200	8.6	8.8		8.2	8.4	9	7	6.8	6.8	5	4.8	4.8	200
205	8.2	8.4		7.8	8.2		6.6	6.6	6.6	4.8	4.6	4.8	205
210	8			7.4	7.8		6.4	6.4	6.6	4.8	4.6	4.6	210
215	7.4			7.2	7.4		6.2	6.2	6.4	4.6	4.4	4.6	215
220				6.8	7		5.8	6		4.4	4.4	4.4	220
225				6.4	6.6		5.6	5.8		4.4	4.2	4.4	225
230				6.2	6.4		5.4	5.6		4.2	4.2	4.2	230
235				5.8	6		5	5.4		4	4	4.2	235
240				5.6			4.8	5		3.8	3.8		240
245				5.2			4.6	4.8		3.6	3.8		245
250							4.4	4.4		3.4	3.6		250
255							4.2	4.2		3.2	3.4		255
260								4			3.2		260


**197 ft**

**43/72/98/125 ft**

**154,300 lbs**

**28'6" x 27'11"**

**360°**
**85**
**85%**

All information given are for reference only.

ft	43		72		98		125		ft
	5°-20°	20°-40°	5°-20°	20°-40°	5°-20°	20°-40°	5°-20°	20°-40°	
55	19								55
60	19								60
65	19								65
70	18.8	17.4							70
75	18.8	17.4	10.6						75
80	18.8	17.4	10.4						80
85	18.6	17.4	10.4						85
90	18.6	17.4	10.4		9.2		6.6		90
95	18.4	17.4	10.2	9.6	9		6.4		95
100	18	17.2	10.2	9.6	9	7.6	6.4		100
105	17.6	16.8	10.2	9.4	8.8	7.6	6.2	6	105
110	17.2	16.4	10.2	9.4	8.6	7.6	6.2	6	110
115	16.6	16	10	9.4	8.6	7.6	6	6	115
120	16	15.8	10	9.2	8.4	7.6	6	5.8	120
125	15.4	15.4	10	9.2	8.2	7.6	5.8	5.8	125
130	15	15	10	9	8	7.6	5.8	5.6	130
135	14.4	14.4	9.8	9	7.8	7.4	5.6	5.6	135
140	13.8	13.8	9.8	9	7.8	7.4	5.6	5.4	140
145	13.2	13.4	9.8	8.8	7.6	7.2	5.4	5.4	145
150	12.6	12.8	9.6	8.8	7.4	7.2	5.4	5.4	150
155	12	12.2	9.6	8.8	7.4	7	5.2	5.2	155
160	11.4	11.8	9.4	8.8	7.2	7	5.2	5.2	160
165	11	11.2	9.2	8.8	7	6.8	5	5	165
170	10.4	10.8	9	8.6	7	6.8	5	5	170
175	10		8.8	8.6	6.8	6.6	4.8	4.8	175
180	9.6		8.6	8.6	6.6	6.6	4.8	4.8	180
185	9.2		8.4	8.6	6.6	6.4	4.6	4.6	185
190	8.8		8.2	8.4	6.4	6.4	4.6	4.6	190
195	8.4		8	8.4	6.4	6.4	4.4	4.4	195
200	8		7.8	8.2	6.2	6.2	4.4	4.4	200
205	7.6		7.4		6	6	4.2	4.2	205
210			7		5.8	6	4.2	4.2	210
215			6.8		5.6	5.8	4	4.2	215
220			6.4		5.4		4	4	220
225			6		5.2		4	4	225
230			5.8		5		3.8	3.8	230
235			5.4		4.8		3.6	3.8	235
240					4.6		3.6		240
245					4.4		3.4		245
250					4		3.2		250
255					3.8		3		255
260					3.6		3		260

All Terrain Cranes

Hydraulic Truck Cranes

Boom Trucks

Carry Decks

Rough Terrain Cranes

Tower Cranes

Tower Cranes

General Information

